



AALIYAH OSHODI

Interior Design Portfolio

-  www.aaliodesigns.co.uk
-  [aalio_designs](https://www.instagram.com/aalio_designs)
-  [linkedin.com/in/aaliyah-oshodi/](https://www.linkedin.com/in/aaliyah-oshodi/)
-  +447837905534
-  hello@aaliodesigns.co.uk

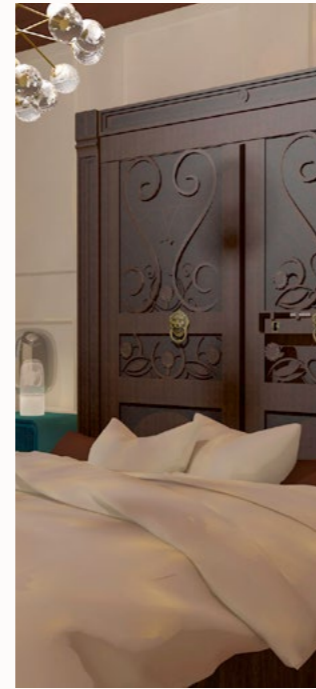
CONTENTS



Potted
4
Commercial



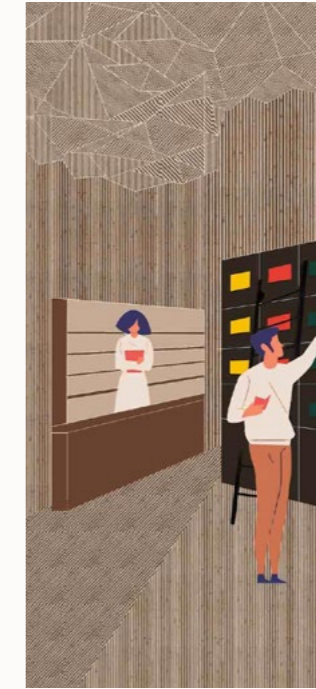
Legacy
12
Commercial



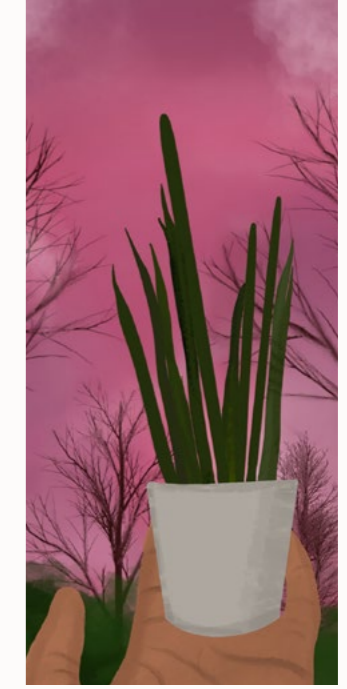
Southall
26
Residential



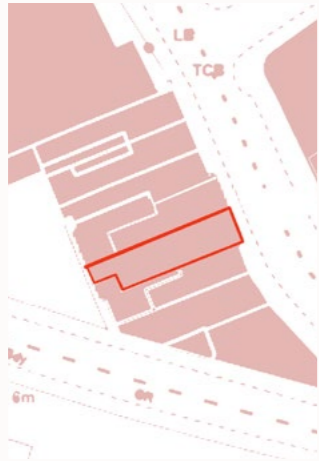
Greenford Road
36
Residential



Edinburgh Spice Emporium
38
Commercial



Illustrations
42
Artwork



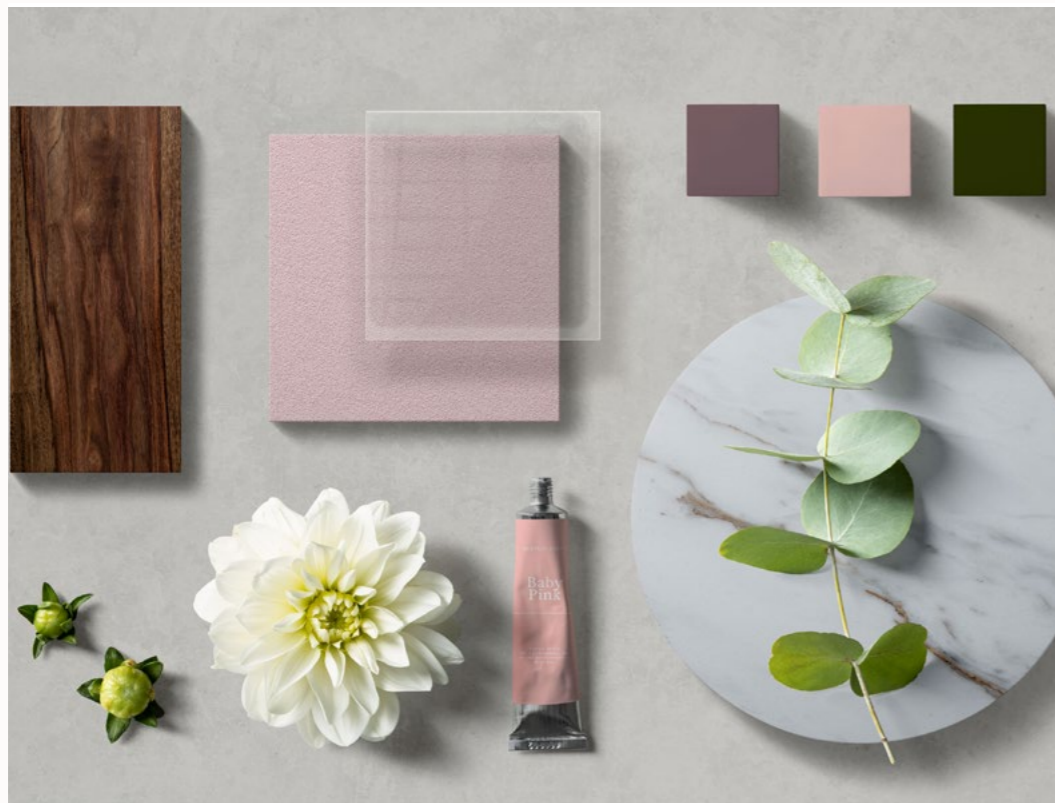
POTTED

Location - Harlesden, London
 Site size - 55sqm
 Key Takeaways - Archicad, Procreate, Material Specification, Retail

The project involved the design and branding of a plant shop in Harlesden, a London borough. The ground floor property was previously a clothing boutique, but it was stripped back for a more minimalist look. A pale pink plaster wall is paired with dark hardwood floors and marble. All concept sketches, 3D renders, plans, sections, and branding were designed by me. Plans and sections were drawn in Archicad and rendered in Procreate. Visuals were generated in CineRender in Archicad.



Render of the shop floor.



Flat-lay material palette



Render of the shop floor.

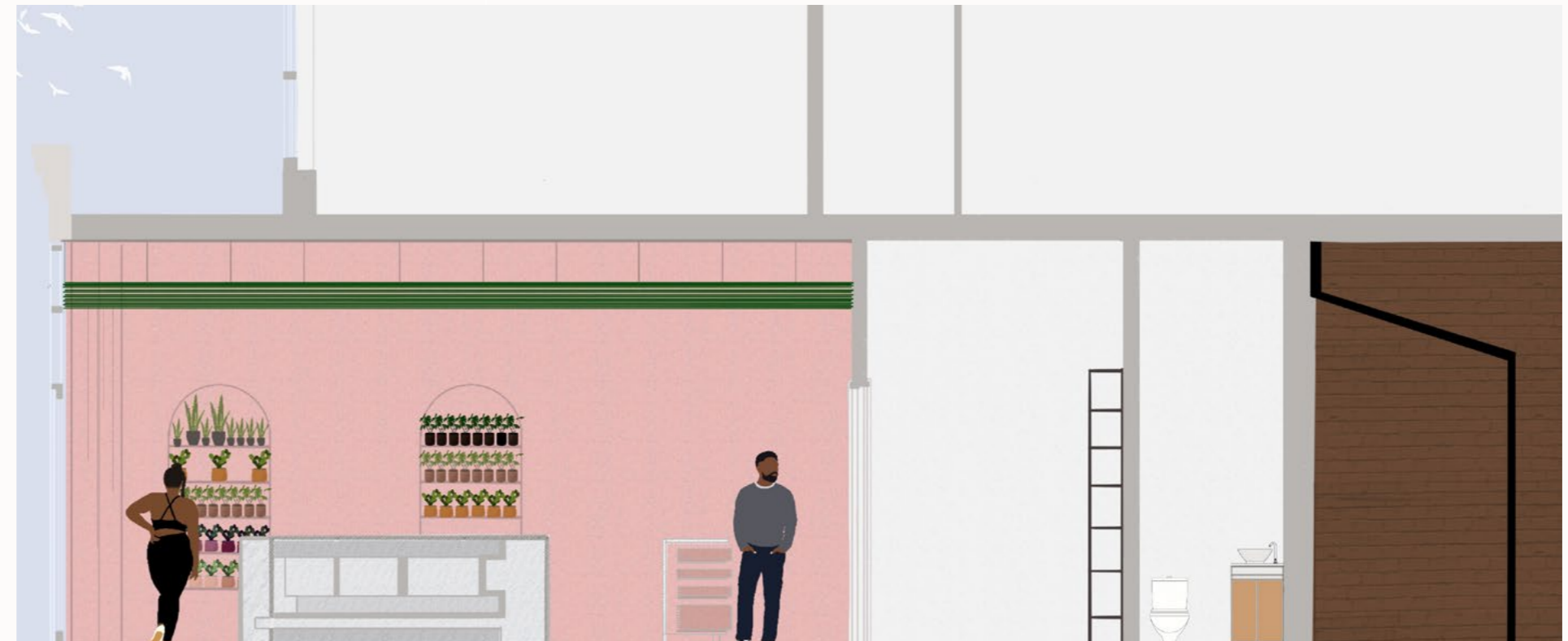
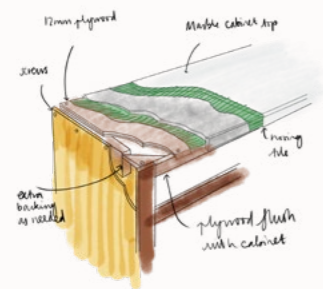
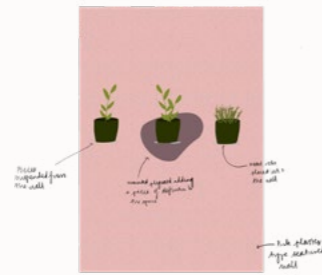
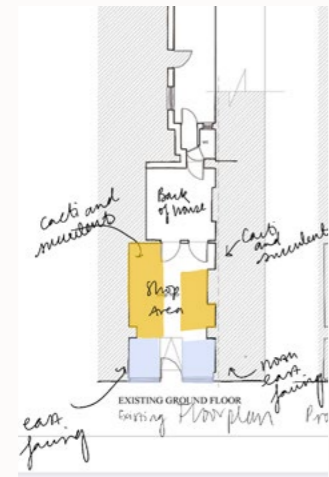
RENDERED FLOOR PLAN / SECTION AA / DEVELOPMENT DRAWINGS

The site is over one-floor comprising the shop floor, back of house storage room and staff bathroom. The interior of the space is full of natural light from large windows.

The space was intended for people looking for plants in the 25-35 age range. Aesthetically minimal, the design makes use of a very reserved colour palette and material palette, but it also makes the space engaging.



- 1 Shop Floor
- 2 Window Display
- 3 Storage
- 4 WC



BRAND GUIDELINES

I created the brand guidelines in Illustrator. The fonts I used were Source Sans Pro and Open Sans, both sans serif. This font style conveys a feeling of being casual, friendly, and approachable.



Type

Potted

Logo & Brand Identity Guidelines

The Typeface Family

Two font styles are used for the brand identity, Source Sans Pro and Open Sans.

When to Use:

Source Sans Pro is the primary font used for headings. It is also used to draw attention to the 2nd half of the tag-line.

It can also be used as the standard when stronger emphasis is needed, such as in: stationery, website design, brochures and all forms of general correspondence.

Source Sans Pro (Bold)

ABCDEFGH

abcd1234

**ABCDEFGHIJKLMN OPQRSTUVWXYZ
abcdefghijklmno pqrstuvwxyz
1234567890!@£\$%^&*()**

When to Use:

Open Sans is to be used for all other forms of standard body text, ranging from: stationery, website design, brochures and all forms of general correspondence.

Open Sans (Light)

ABCDEFGH

abcd1234

ABCDEFGHIJKLMN OPQRSTUVWXYZ
abcdefghijklmno pqrstuvwxyz
1234567890!@£\$%^&*()

Logo

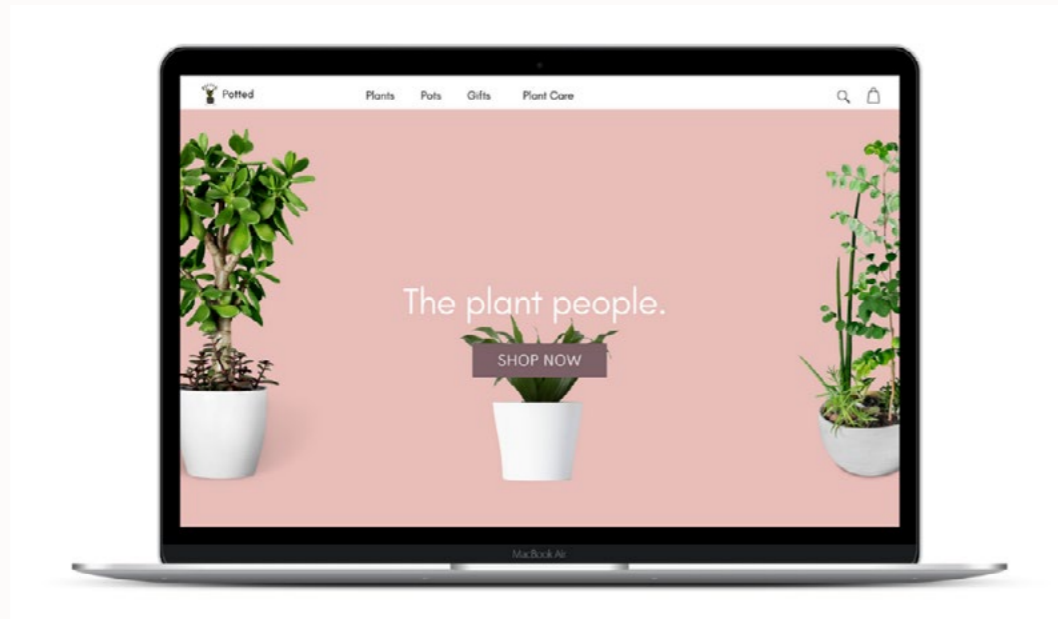


Monologo



WEBSITE MOCKUP

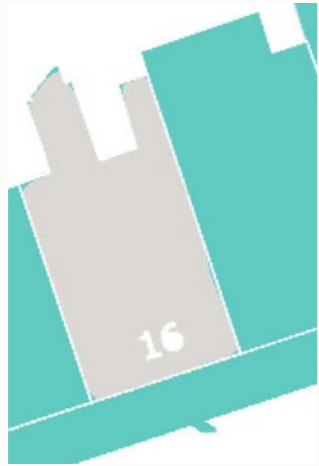
In Canva, I developed a website mockup following the branding criteria. The website uses the branding colours pink, ensuring that it was consistent with the whole brand.



COLLAGE

Collage sketch of the facade of the building drawn in Procreate.





Legacy

The site was in Edinburgh's New Town, a conservation area in northern central Edinburgh. It is a six-story Georgian townhouse from the late eighteenth century. On a 725m² site, it is a Category A listed building.

The mission of the archive was to promote the collection and preservation of records that document the lives of the black diaspora across Scotland. Specifically, the interior spaces preserve, amplify, and preserve the voices of black people in Scotland.

Displaying the work and passions of black people across Scotland through its cabinet wall design.

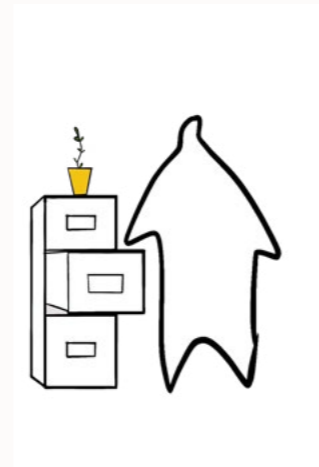
Concept Sketch



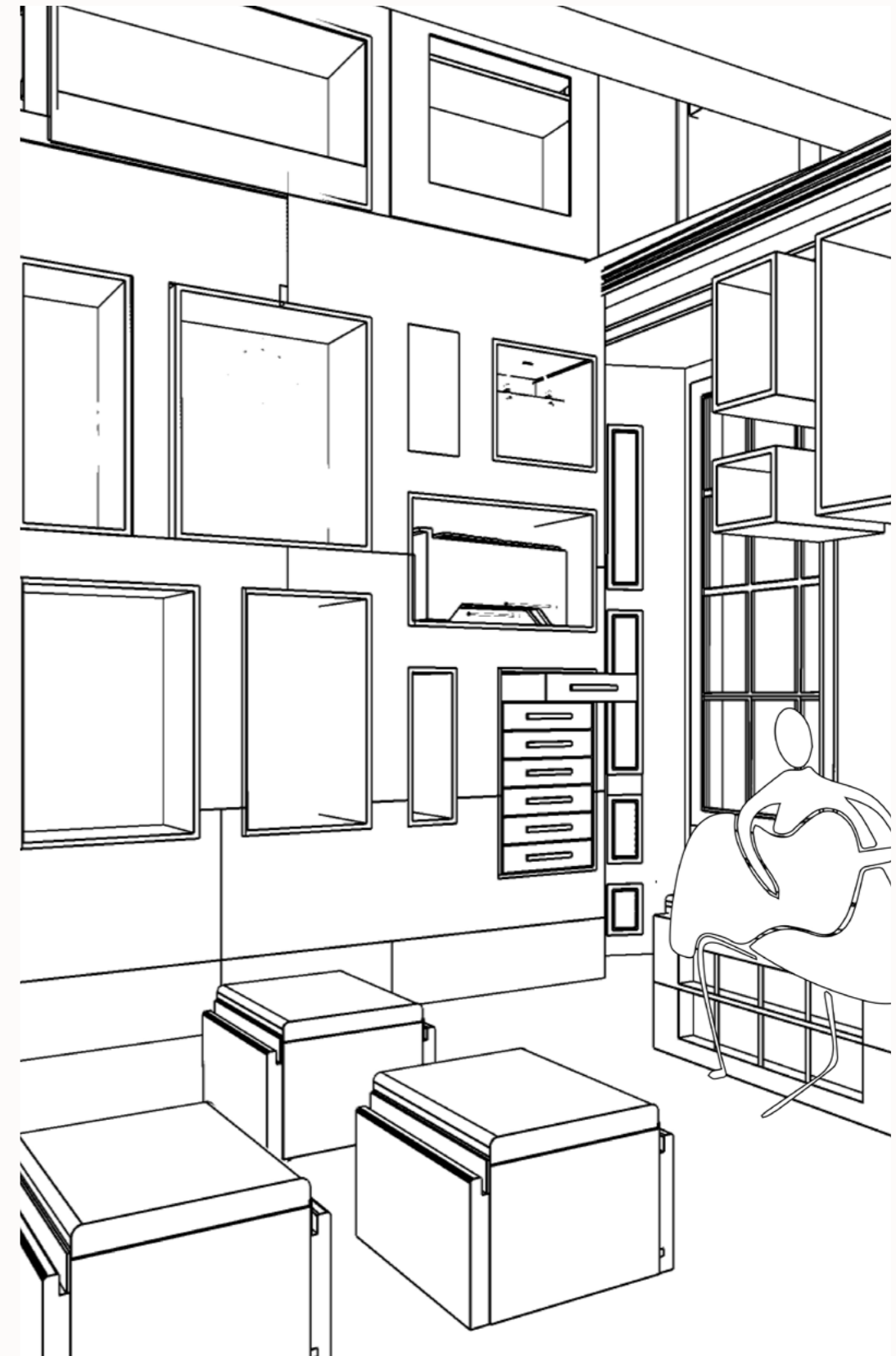
Community



Spotlight

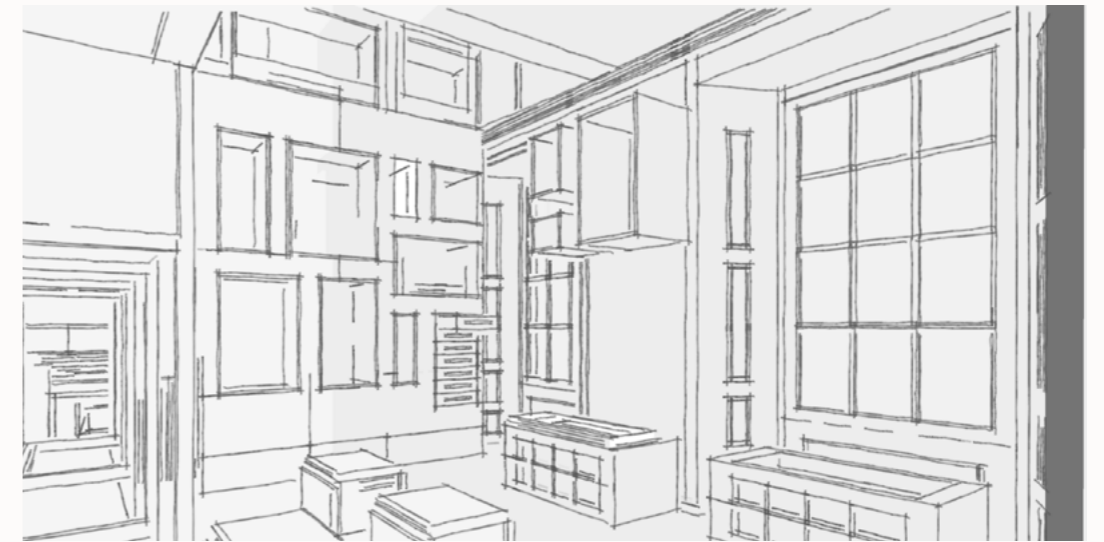
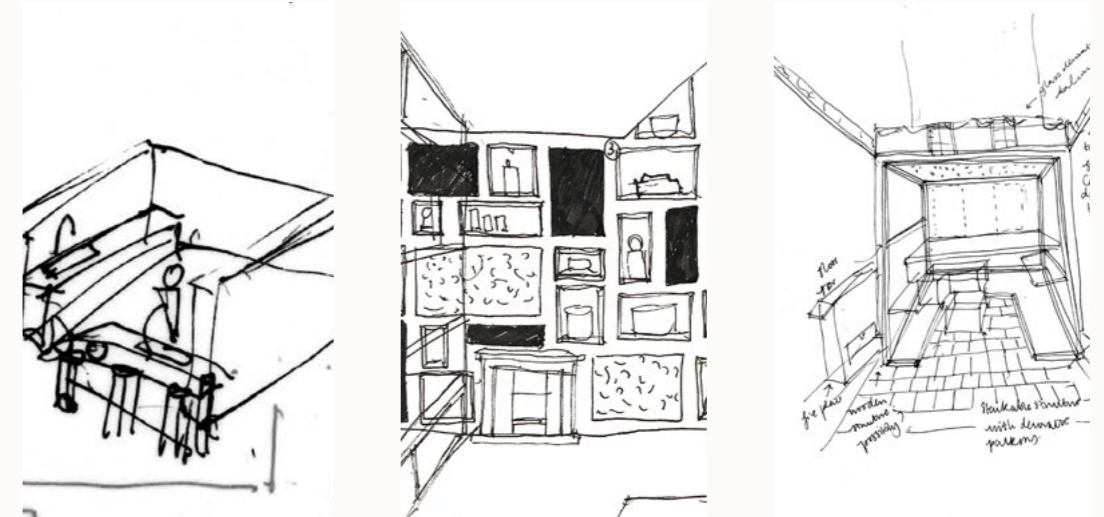


Collection



DEVELOPMENT DRAWINGS

During the development of the space, hand-drawn design sketches of the interior were drawn. I was able to develop a concept that accurately reflected the community's needs after determining the proportions of the space meter.

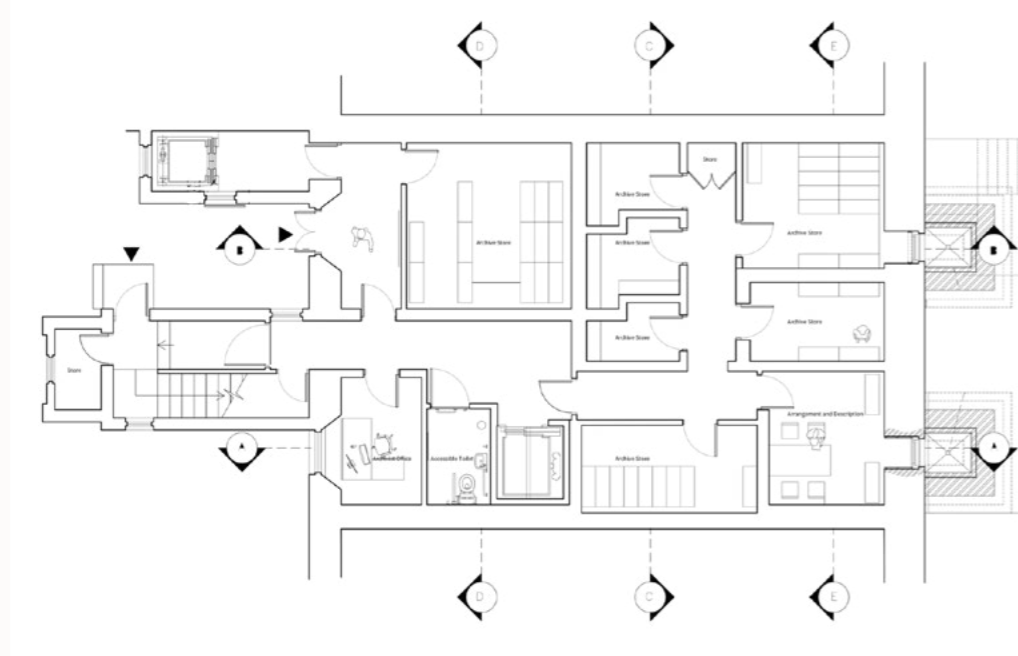


Concept Sketch of Main Space

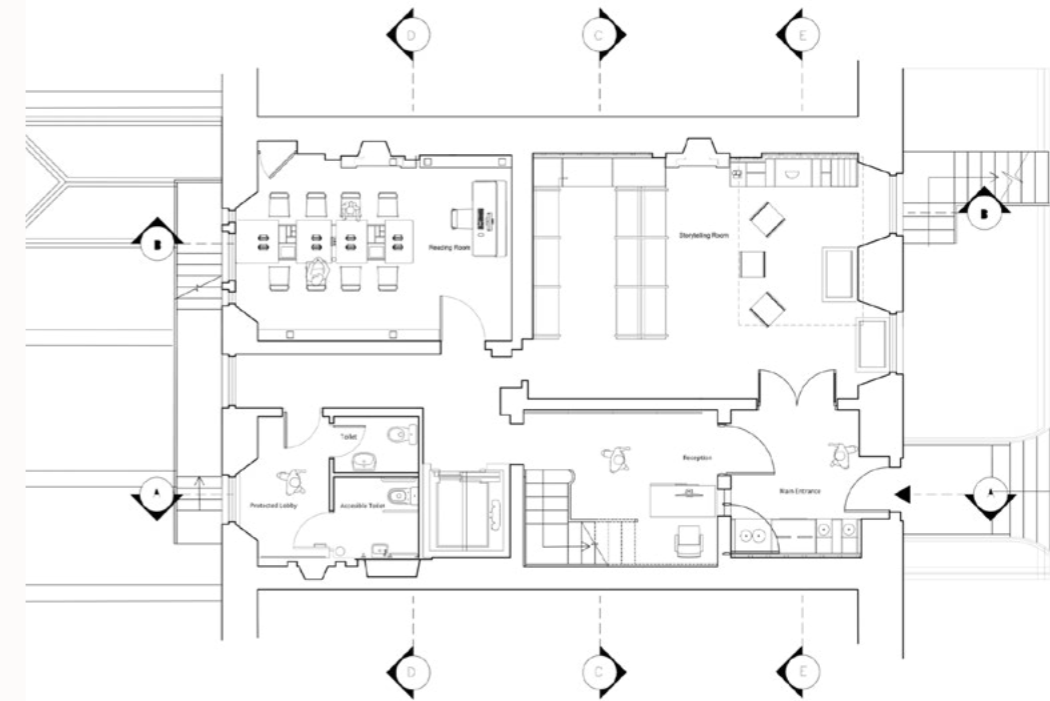


Wireframe drawing of main space in Sketchup

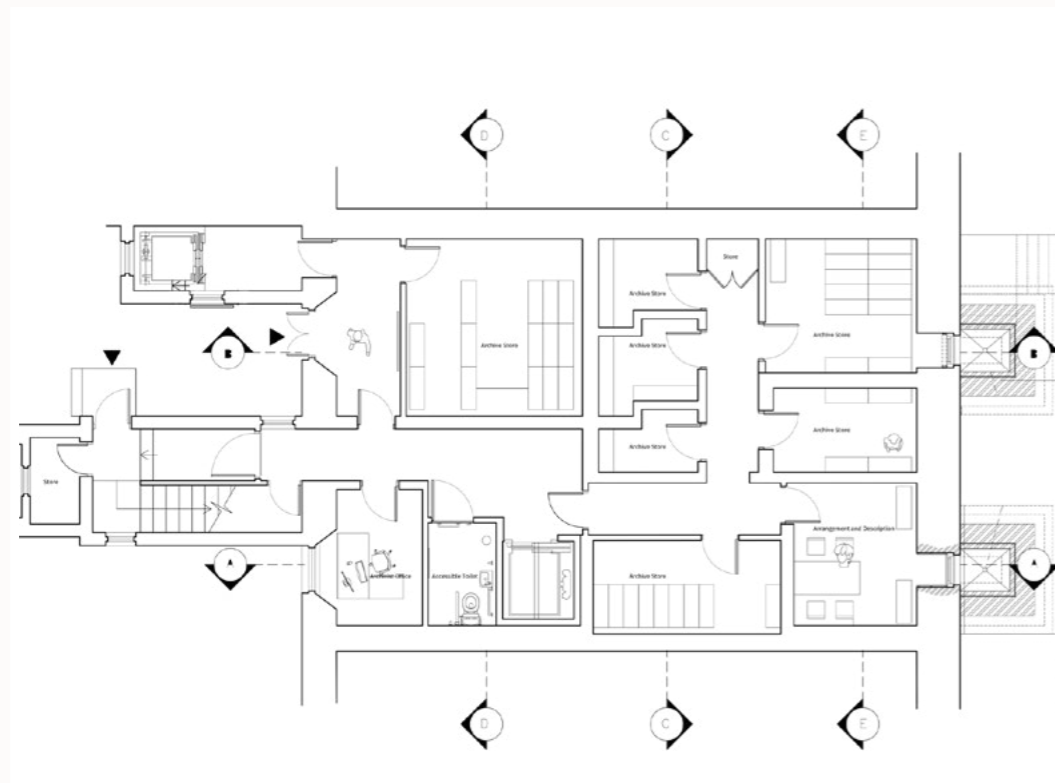
BUILDING PLANS



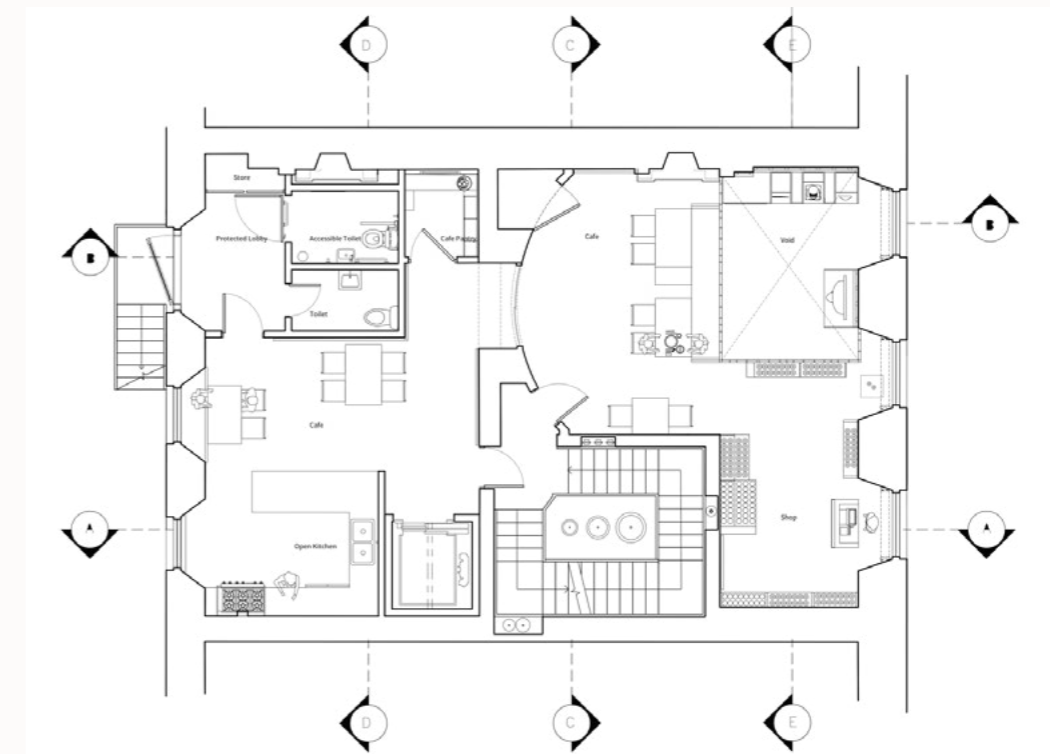
LEGACY BASEMENT FLOOR PLAN NTS



LEGACY GROUND FLOOR PLAN NTS

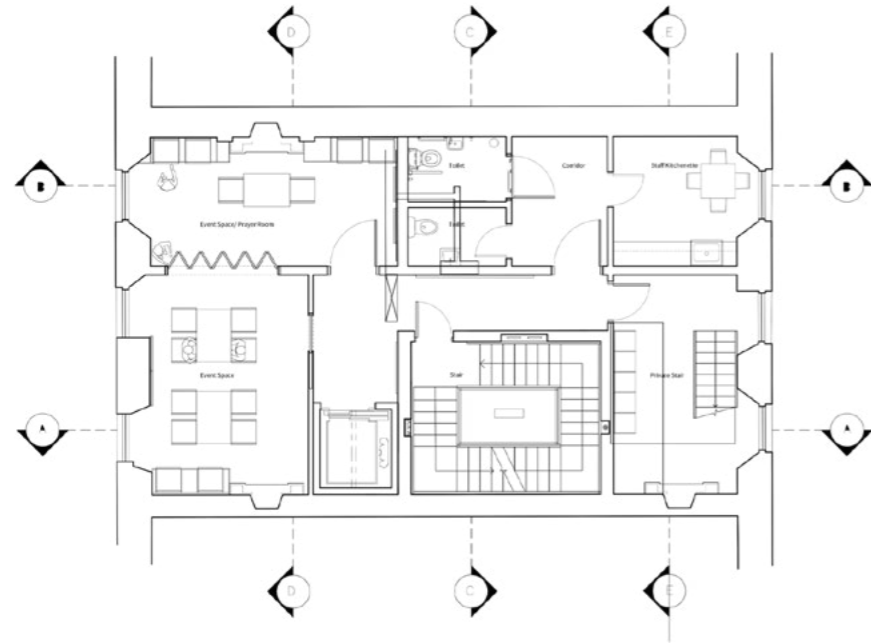


LEGACY LOWER GROUND FLOOR PLAN NTS



LEGACY FIRST FLOOR PLAN NTS

BUILDING PLANS / SECTION AA
/ MATERIAL PALETTE



LEGACY SECOND FLOOR PLAN NTS



LEGACY ATTIC PLAN NTS



RENDERED SECTION DRAWING / EXPLORATIVE DETAIL DRAWINGS

Box Frame Construction

1. 51mm x 25mm machined aluminum anodized semi-recessed downlight. 3000K downlight held in place with a security ring.
2. 10mmx 80 mm nylon plug
3. 50x75 birch plywood batten attached to the existing wall using countersunk screws
4. 50 x 60mm brass plated picture slotted hanger fixing the box to the wall.
5. 12 mm birch plywood carcass base with a rabbet joint
6. M4 X 30mm Phillips Countersunk Screws (DIN 965H)

Wall panel construction

7. M735 aluminum Z clip with a 6.35mm profile and 15 mm lift off
8. 6mm diameter Rawlplug UNO Universal Contract Wall
9. Plug with a M8x 68mm (DIN 933) Zinc hex head concrete setscrew
10. 81mm Leatherette Fabric Wallpanel with concealed metal frame
11. 50x100m Pau Rosa veneered seat back

Wall construction

12. 437mm stone rubble wall with 13mm lightweight plaster applied to both faces. Finished with 12mm paint.

Seat Construction

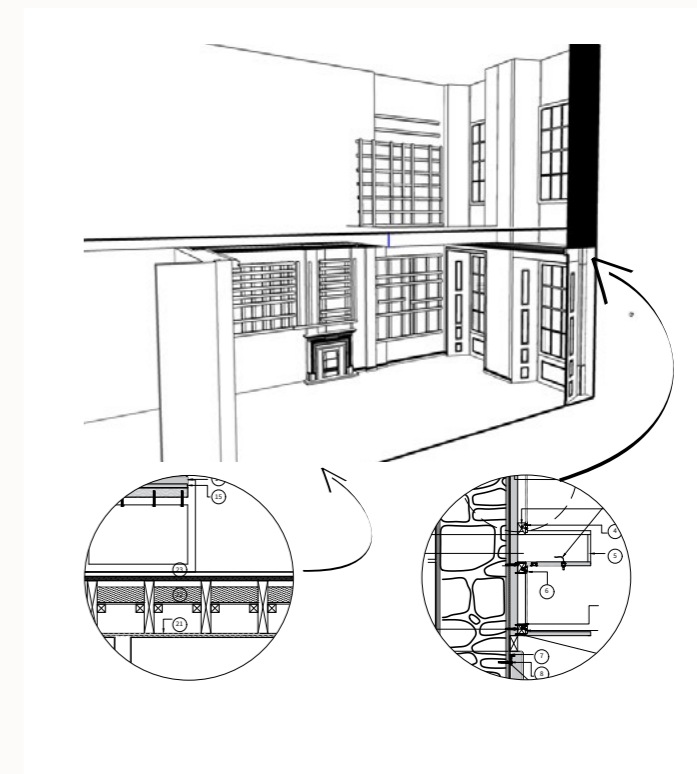
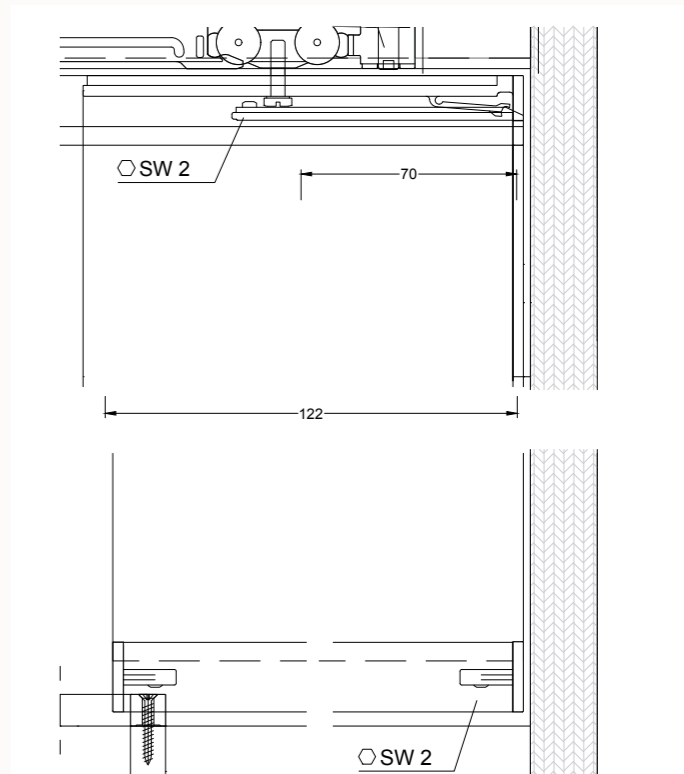
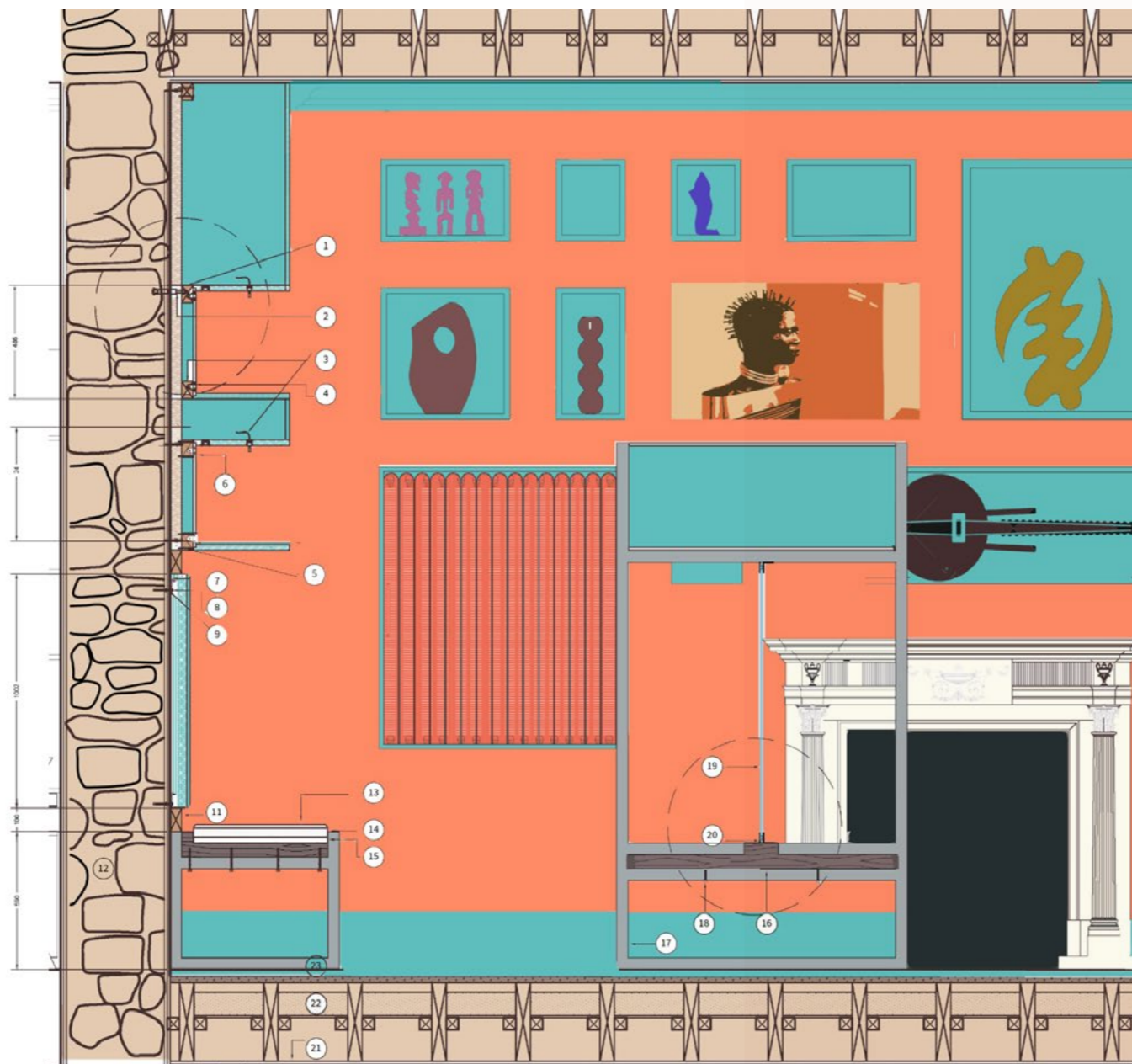
13. 2mm Flame Retardant Navy Faux Leatherette Fabric.
14. 25mm high density foam attached to 12.7mm batting with spray adhesive
15. 20mm birch plywood backing

Bench Construction

16. 60mm solid polished Pau Rosa wood
17. 45mm by 45mm welded brushed stainless steel finished with beeswax
18. 5mm x 120mm Hex carbon steel self drilling screw with a carbon steel washer
19. 6x12mm stainless steel socket countersunk screw
20. 19mm safety glass

Floor Construction

21. 128mm hardwood floorboards of 307x63mm joists
22. 100mm ash deaftening on support slats
23. 28mm lath and plaster ceiling, new 12.5mm skim coat over existing ceiling.



MOCK-UP OF DESIGN BOOK / MATERIAL PALETTE

A design book was created that detailed my project from start to finish. It went into great detail about the design process and the research. This book was created in InDesign, and the mock-up in Photoshop.



The colour palette was inspired by Caribbean landscapes, and the prints were influenced by African prints from across the continent. In Illustrator, I created my own patterns and prints.

VISUALS

The first image is a post-digital rendering of the Storytelling Centre's interior. The remaining visuals were created in Sketchup, and I rendered them in Twilight.



Storytelling Centre



Cafe



Reading Room



Lower Ground Floor Lobby



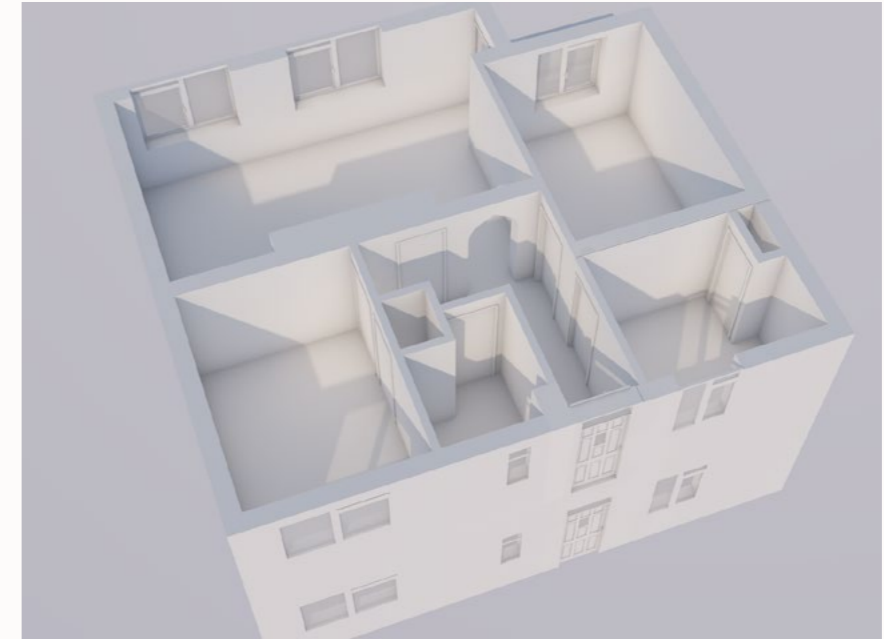
SOUTHALL

A two-bedroom flat concept in Southall, Ealing. I wanted to create a space infused with British and Indian influences because Southall is affectionately known as 'Little Punjab.' Arches, carved wooden doors, and fireplaces are common features of Punjabi architecture.

My strategy was to incorporate traditional Punjabi styles into the architecture while adding a British twist.

To respectfully incorporate popular Punjabi textiles, I decorated the space with simple dhurrie and jute rugs.

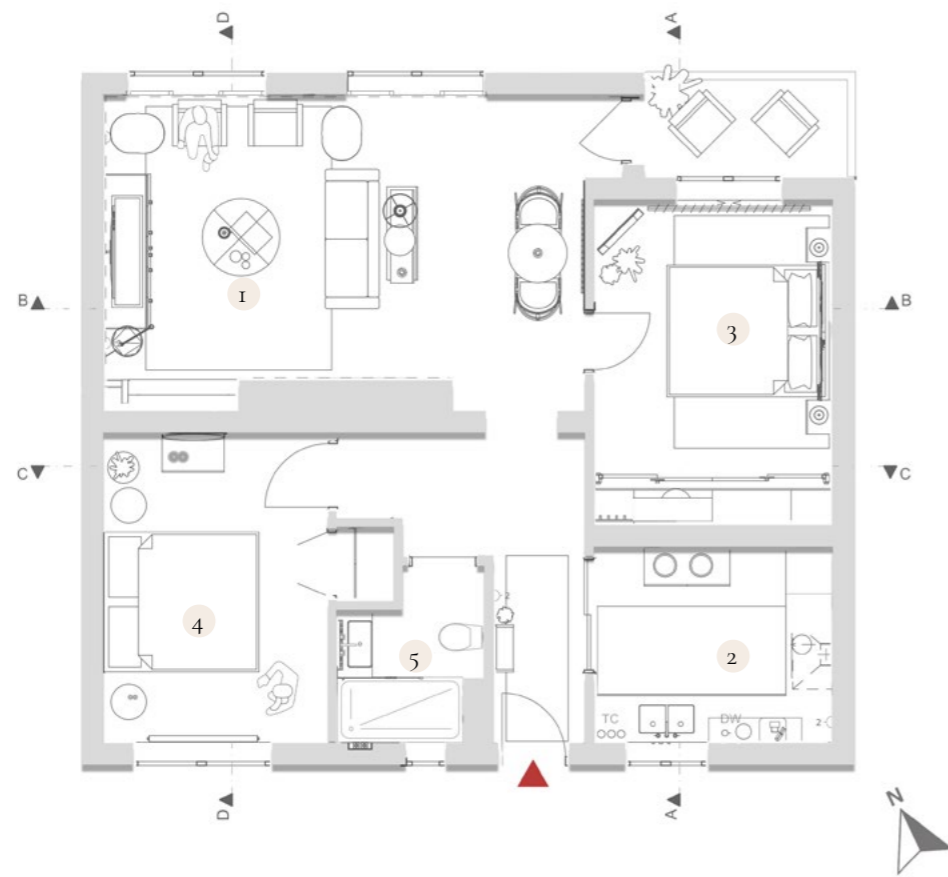
BEFORE AND AFTER WHITE CARD MODEL OF THE SPACE



BUILDING PLANS AND SECTIONS

I attempted to replicate the natural materials used in traditional Punjabi homes. In keeping with traditional Punjabi interiors, the colour scheme opted for dark brown and earthy tones.

The plans and sections were created in Archicad and then rendered with CineRender in Archicad.



- 1- Living Room
- 2 - Master Bedroom
- 3- Kitchen
- 4- Bedroom 2
- 5- Bathroom

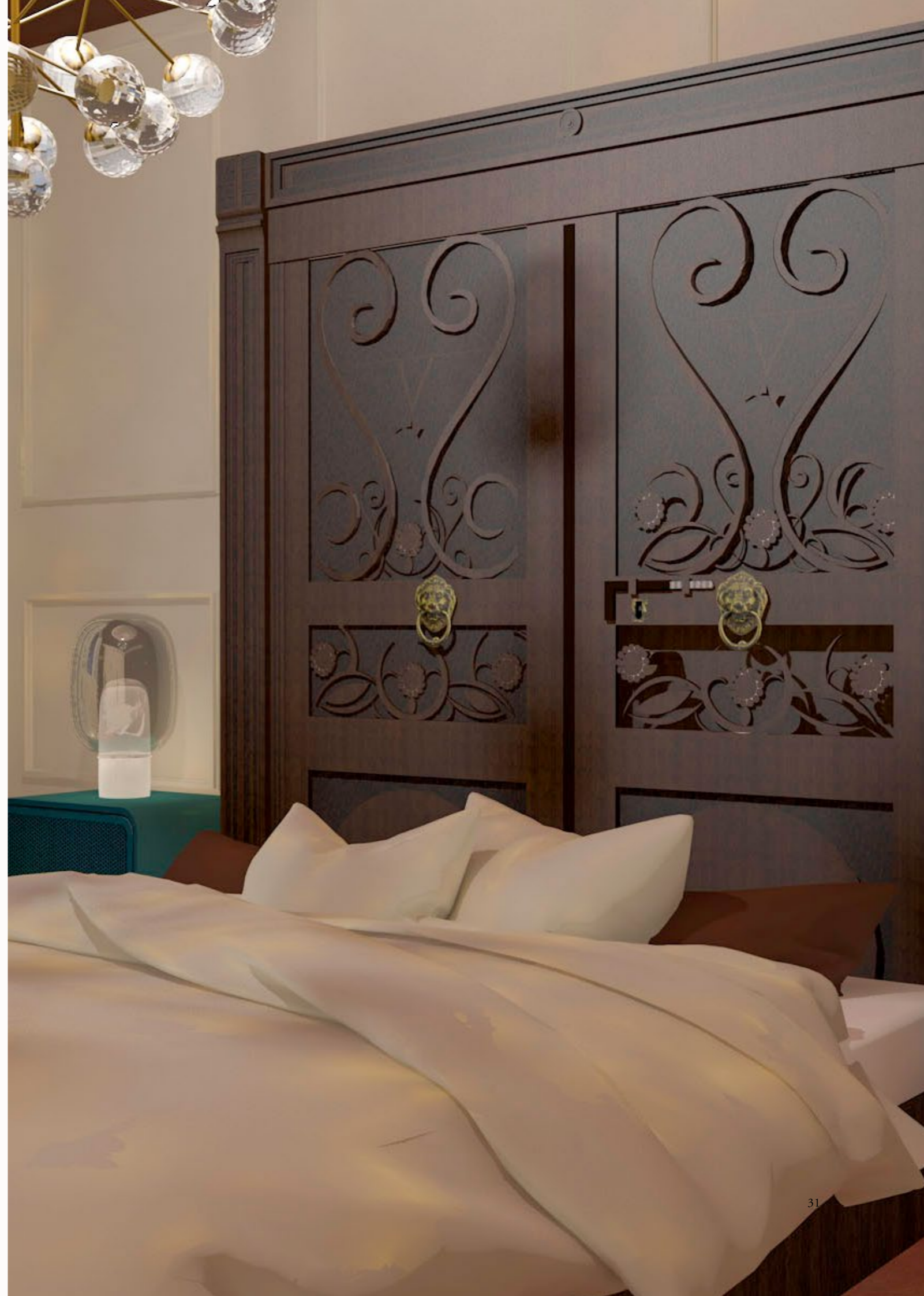
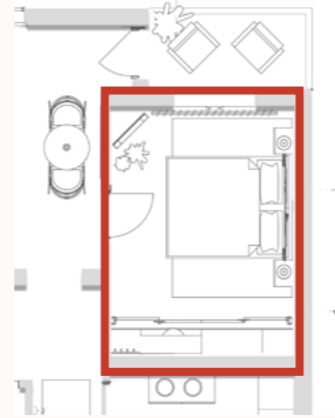


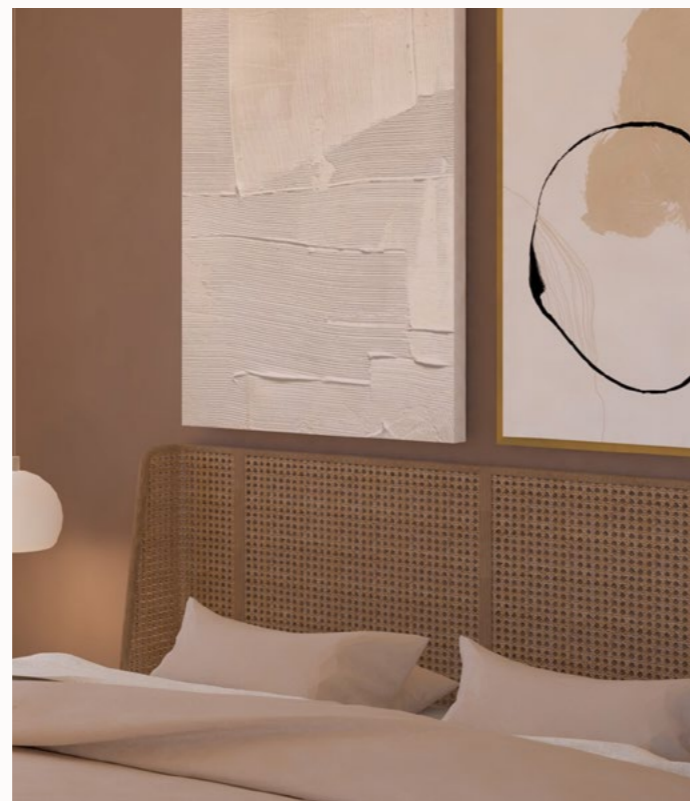
Section AA

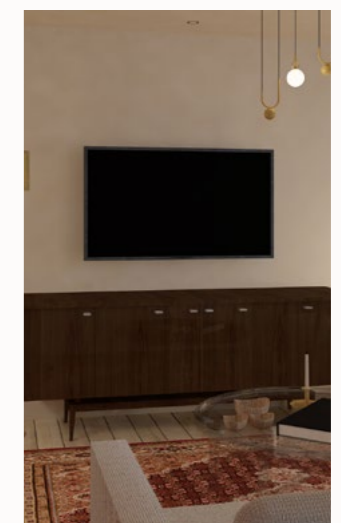
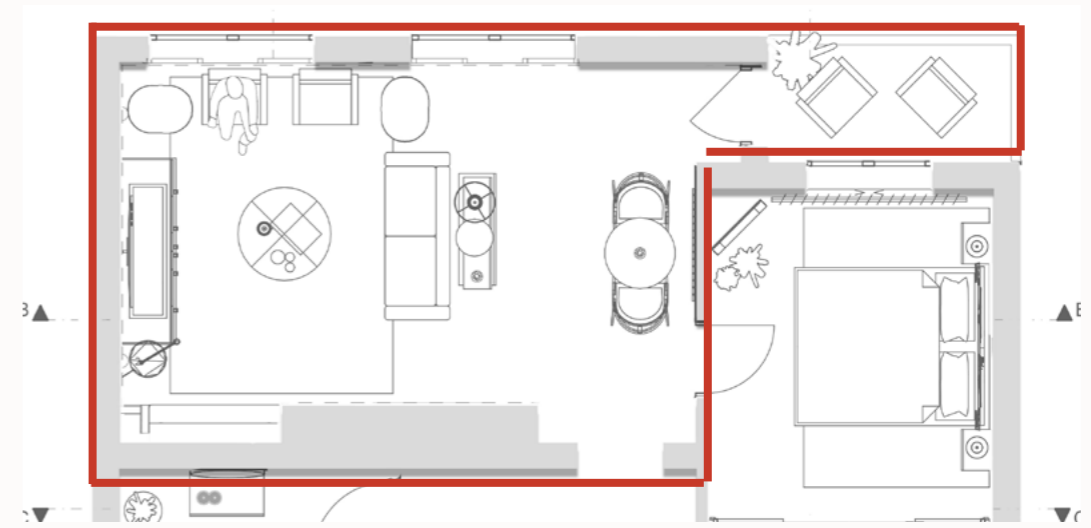


Section DD

RENDERS OF FIRST BEDROOM









Render of the kitchen.



Render of the bedroom.

GREENFORD ROAD

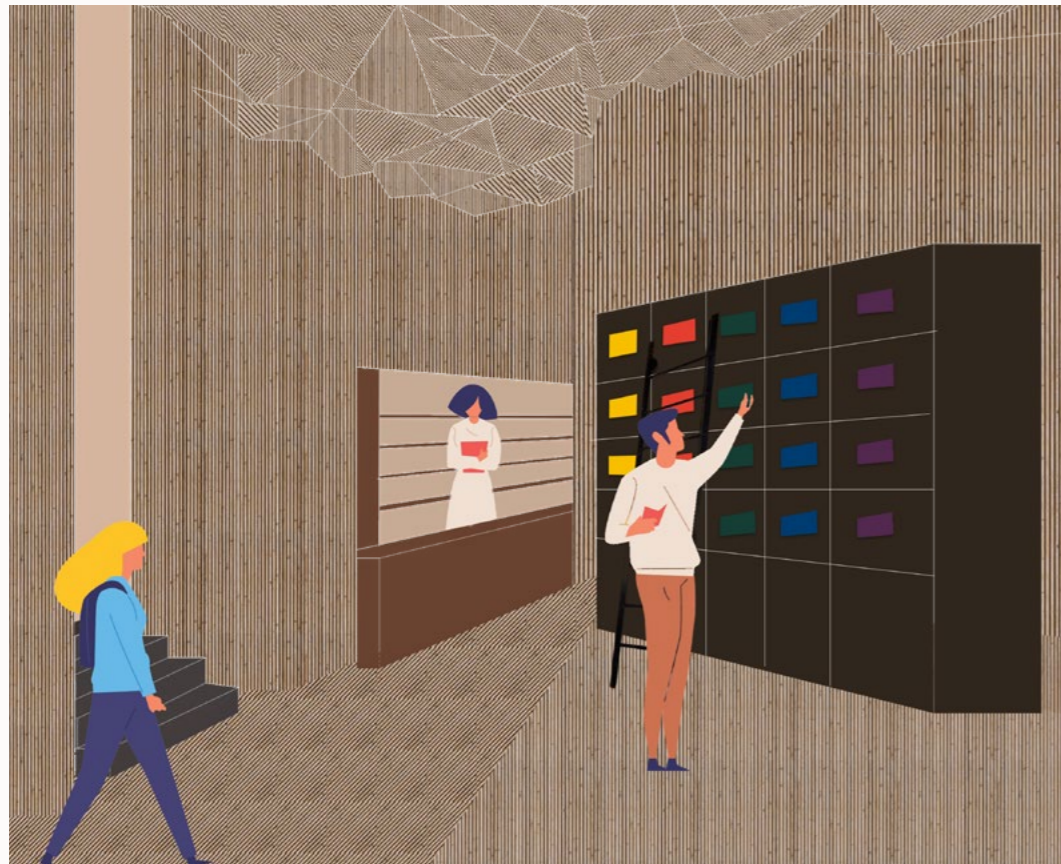
Location - Greenford, London
Key Takeaways - Archicad, Residential Interior Design,
Colour schemes

The project entailed creating a conceptual design for a studio apartment in Greenford, London. For a cosy, relaxing atmosphere, I contrasted a light wooden floor with brushed brass.

A wooden canopy bed and two bedside-style pieces of furniture helped to establish a solid foundation that supported the interior shape. Since the space is a studio and small, it was critical to focus on multifunctional furniture.



Render of the bathroom.



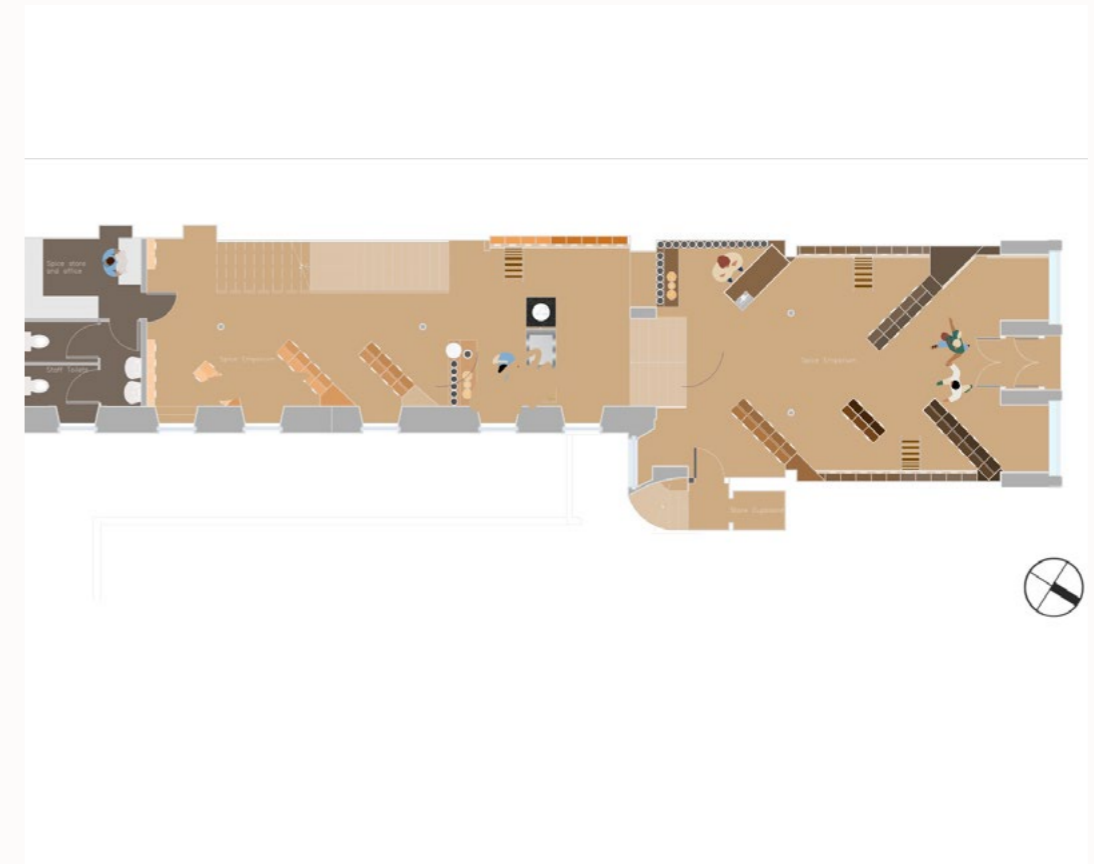
Render of the kitchen.

EDINBURGH SPICE EMPORIUM

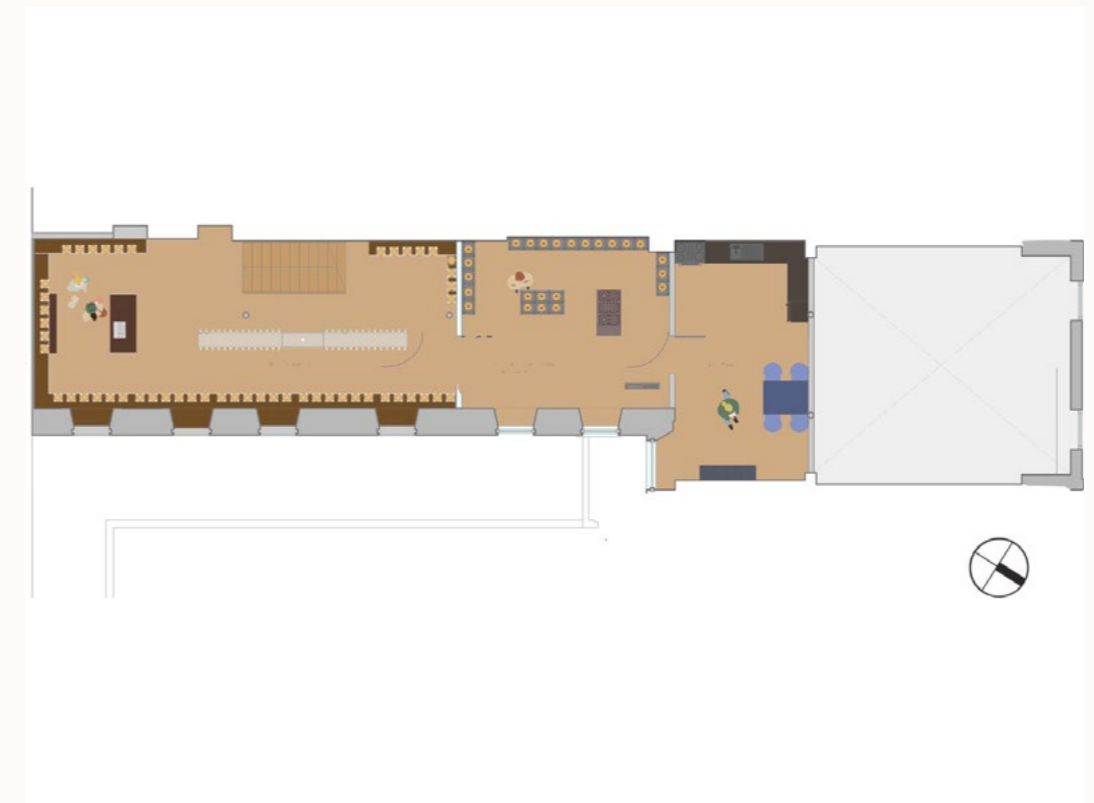
Location - Greenford, London
 Key Takeaways - Joinery Detail, Interior Material Specification and Adobe Illustrator

This project involved designing an interior for a spice shop in a Category C listed building in Edinburgh. The design concept was to create a warm yet atmospheric environment by taking the natural elements of spices and herbs, mixing them with colourful motifs, textures and patterns.

As the building is a listed, a delicate balance had to be struck in order to achieve an innovative design scheme that respected the architecture of the building.



Ground floor plan



First floor plan

SECTION AA



Section AA

Materiality

Materiality and the use of diverse timbers is something that I investigated extensively. I sought to create a space that used a range of timbers from around the world. These hazelnut tree trunks as well as wood carvings painted over locally produced timber panels sourced from local craftspeople.

ILLUSTRATIONS

